

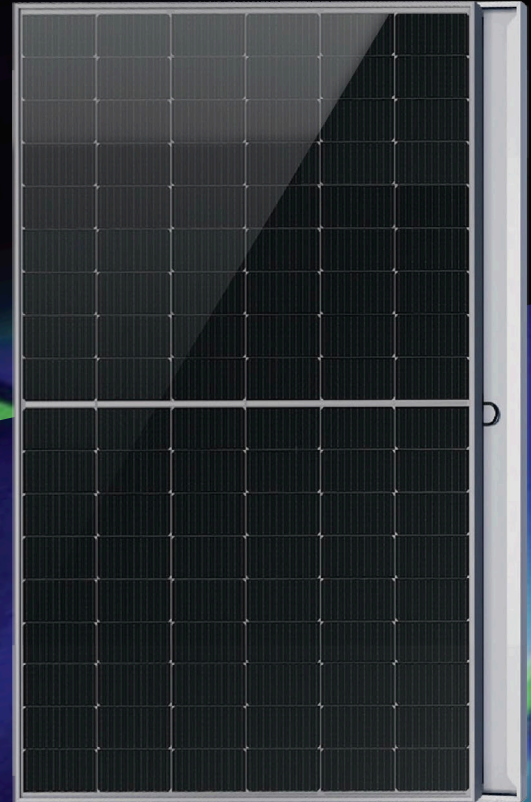


Monofacial Series



# 400~420W

## HY-P10/54H



Module Efficiency up to 21.5%



SMBB + Half-cell tech, reduce internal current loss, improve module efficiency, minimize micro-crack impacts, and improve module reliability



Non-destructive Slicing Tech, reduce micro-crack risk



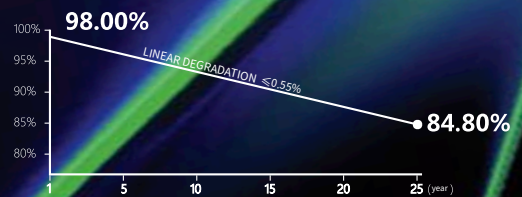
Resistant to harsh environments



Anti PID



More energy yield, lower BOS and LCOE



15-YEAR PRODUCT WORKMANSHIP WARRANTY

25-YEAR LINEAR POWER WARRANTY

### Comprehensive Products and System Certificates

IEC 61215, IEC 61730  
ISO 9001:2015 Quality management systems  
ISO 14001:2015 Environmental management systems  
ISO 45001:2018 Occupational health and safety management systems



**HOYUAN Green Energy Co.,Ltd.**

© HOYUAN Green Energy Co.,Ltd. all rights reserved.  
The product specifications are subject to change without prior notice.  
Please use our latest version.

Group Headquarter: No. 158 Nanhu Middle Road, Binhu District,  
Wuxi City, Jiangsu Province, China

Tel: 0510-85958787

E-mail: [info@hoyuan.com](mailto:info@hoyuan.com)

Web: <https://module.hysolar.com>

## Electrical performance parameters

\*STC: Irradiance 1000W/m<sup>2</sup>, Cell Temperature 25° C, AM=1.5

Rated output (Pmpp / Wp)	400	405	410	415	420
Rated voltage (Vmpp / V)	31.01	31.16	31.31	31.46	31.61
Rated current (Impp / A)	12.90	13.00	13.09	13.19	13.29
Open circuit voltage (Voc / V)	36.78	36.93	37.08	37.23	37.38
Short-circuit current (Isc / A)	13.52	13.61	13.70	13.80	13.89
Module efficiency	20.5%	20.7%	21.0%	21.3%	21.5%
Power tolerance	0~+5W				

NMOT: Irradiance 800W/m<sup>2</sup>, Ambient Temperature 20° C, AM=1.5, Wind Speed 1m/s

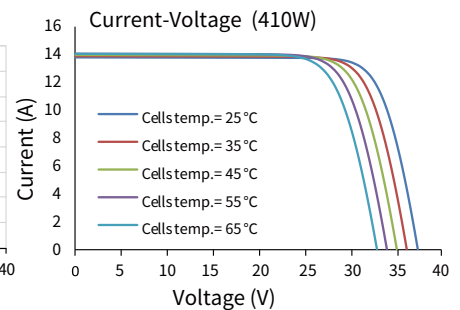
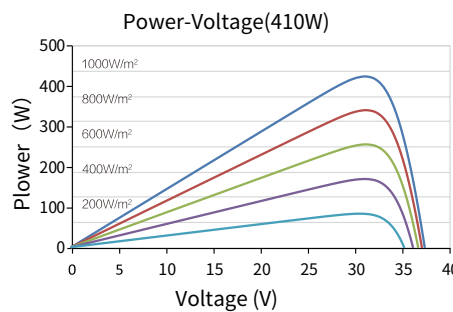
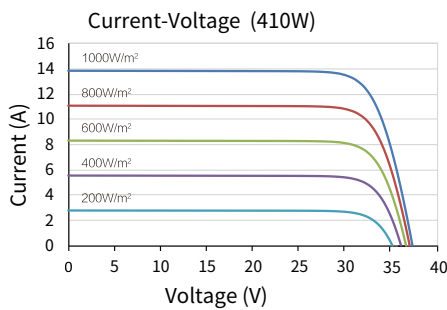
Rated output (Pmpp / Wp)	302.8	306.6	310.3	314.1	317.9
Rated voltage (Vmpp / V)	28.76	28.90	29.04	29.18	29.32
Rated current (Impp / A)	10.52	10.60	10.68	10.76	10.84
Open circuit voltage (Voc / V)	34.72	34.86	35.00	35.15	35.29
Short-circuit current (Isc / A)	10.82	10.90	10.97	11.05	11.12

## Temperature Ratings (STC)

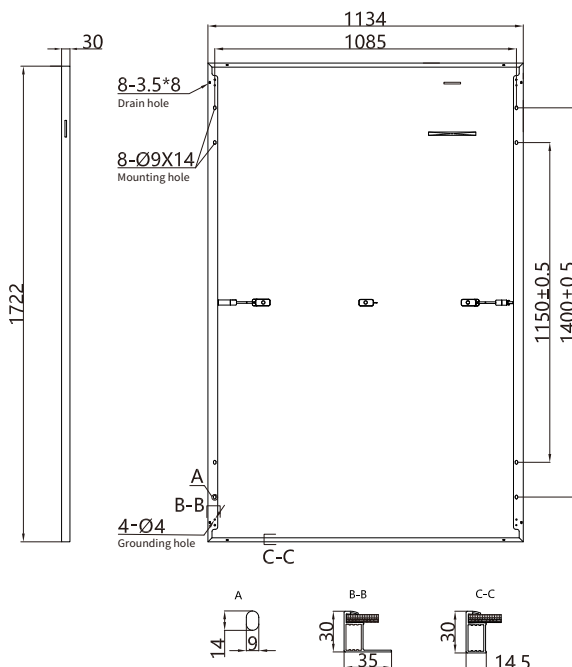
Temperature coefficient (Pmpp)	-0.34%/°C
Temperature coefficient (Isc)	+0.05%/°C
Temperature coefficient (Voc)	-0.26%/°C
Nominal module operating temperature (NMOT)	42±2°C

## Operating Parameters

Max. system voltage (IEC)	1500V <sub>DC</sub>
Number of diodes	3
Junction box IP rating	IP 68
Max. series fuse rating	25 A
Operational temperature	-40~+85°C



## Mechanical parameters



Outer dimensions (L x W x H)	1722x 1134 x 30 mm
Cell	P type mono-crystalline
Number of cells	108 (6*18)
Frame Type	Aluminum, silver anodized
Glass thickness	3.2 mm
Cable length (including connector)	Portrait: (+)300 mm, (-)300 mm; Customized length
Cable diameter (IEC)	4 mm <sup>2</sup> / 12 AWG
① Maximum test mechanical load	5400 Pa (front) / 2400 Pa (back)
Connector type (IEC)	MC4 EVO2 compatible/MC4 EVO2
Module weight	21.3kg
Packaging unit	36 pcs / box
Weight of packing unit	810 kg/box
Modules per 40' HQ container	936 pcs

① Please refer to the installation manual or contact us to confirm.  
The maximum test mechanical load = 1.5 × maximum design mechanical load.

\*The data above is for reference only and the actual data is in accordance with the practical testing. Power Measurement Tolerance ±3% under STC standard.